

From Mistley to Manningtree

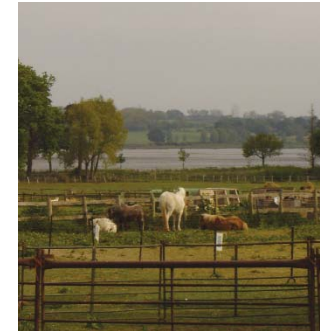
July's walk, courtesy of the county's Public Rights of Way team, takes us from Mistley to Lawford via Manningtree experiencing splendid views on route



Above Manningtree
Left Mistley Towers



Above St Marys church, Lawford
Right Mistley Quay
Far right Mistley Place park



1 Start the walk by turning left out of the railway station car park along Mistley High Street. On the left-hand side there is a factory (or maltings); the path turns left here into the factory yard. The path is marked out on the floor with yellow paint. Keep to the yellow path and this will lead you to the back of the factory yard. The path turns right and then left up some steps towards a tunnel under the railway. At the other end of the tunnel go down the steps towards the kissing gate. This part of the route follows the 81-mile Essex Way, look out for the special disks with poppies on.

2 Go straight across the field and through a kissing gate. Turn right and walk up this shady green lane until you reach a

junction with another path on your right. Take this path; it leads back under the railway and past the cricket ground and cemetery. As you are nearly at the church, turn left, and you will come out in the church car park.

3 Turn right out of the church car park and walk along the pavement. On the left is Mistley Place Park, which has a tearoom and toilets as well as lots of animals to see. At the end of the road, cross over and take the path that walks round the back of Manningtree. Once you have seen these intriguing towers, turn left and follow the road into Manningtree along The Walls. You will pass by the Swannery and plenty of ice cream vans and picnic places.

4 Follow the road left into the High Street of Manningtree, where there are more places to eat and drink. Keep walking until you reach the junction of South Street on the left. Follow South Street as it winds its way out of Manningtree, you will see a church on your left, just before the road turns. At the end of South Street, turn left on to Brook Street. As you reach the bridge over the railway, cross over the road and take the path on your right, which follows beside the railway. You are once again following the route of the Essex Way.

5 At the end of the path, turn left and head under the railway bridge. Turn right and head up hill until you reach another road. Cross over and take the

path straight ahead of you that runs beside the playing fields and school, this is tarmac surfaced. The tarmac path leads behind houses and will eventually come to open fields. Turn right and walk around the edge of the field. The path then goes into more natural surroundings heading down a steep hill towards a bridge. Head across the bridge, turning right and make your way back up the hill until you reach the road.

6 Turn left on reaching the road and walk along the pavement until you reach a private road. Directly across the road is a track, cross over and take this until you reach a metal kissing gate at the end. Go through the kissing gate, down the hill and keep left. You will see a

wooden gate in front of you. Go through the gate and head up the hill (following the worn path) towards St Mary's Church, Lawford. On the right there is a wall around the churchyard and a stile. Cross over the stile and walk straight ahead through the churchyard. (If you cannot use the stile, keep following the wall and you will find another entrance into the churchyard.) At the other end turn right and head through a gate. This path goes steadily down hill.

7 At the bottom of the hill turn right on to a track and on the left there is a path that takes you up to Manningtree Station (signposted). There are trains every hour that can take you back to Manningtree and there is also a café on the platform.

Essential checklist

- Distance** Approx. 3 miles/4.8 km. This could take you anything from 1½ to 3 hours to walk depending on how much you stop and see along the way.
- Start** Mistley Railway Station
- Map** OS Explorer 184 Colchester
- Parking** Free parking at the railway station or you could use the train to get to the start
- Refreshments** There are plenty of tearooms, pubs and toilets en route
- Tourist Information** Contact Flatford TIC on ☎ 01206 299460

Read more on Manningtree and Mistley on [page 92](#)

The Essex Walk is Sponsored by



Outdoor Wear for the Whole Family plus Camping Supplies

FREE Tilley PRODUCT WITH EVERY Tilley HAT BOUGHT DURING JULY

Your local independent stockist of, among others:



Barbour.



2-4 North St, Great Dunmow, 01371 872483 www.jacksandjills.co.uk

